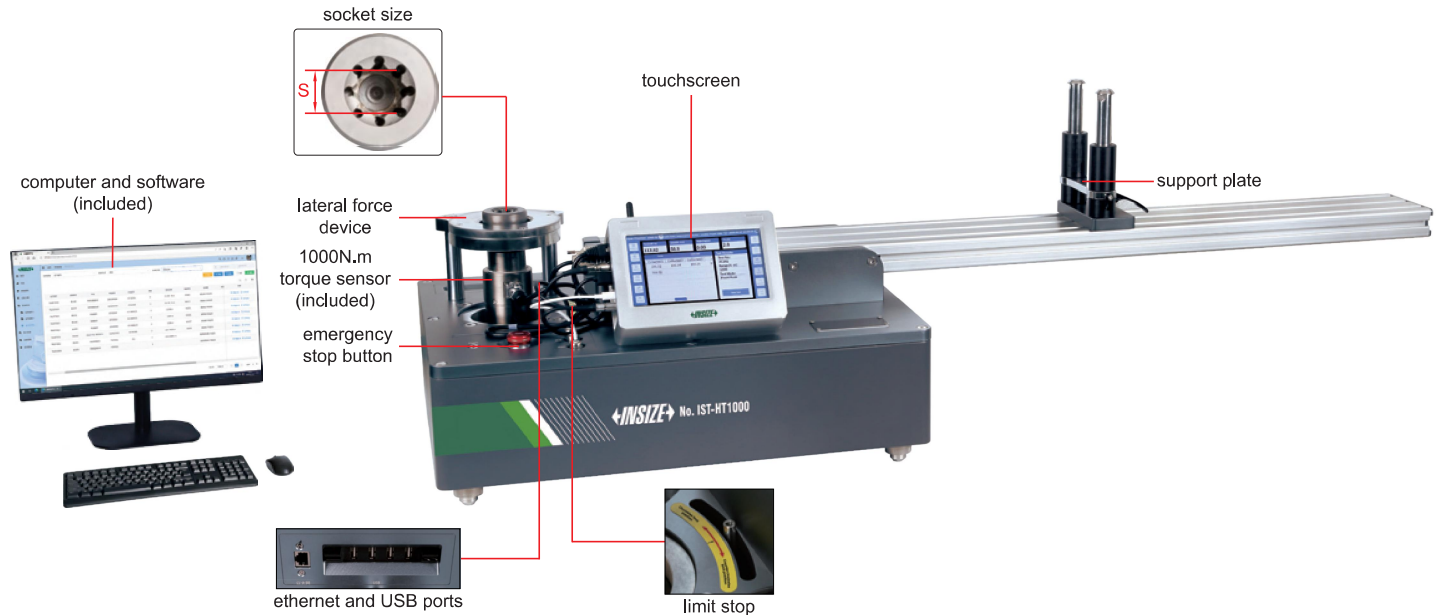


AUTOMATIC TORQUE WRENCH CALIBRATOR

CODE IST-HT1000



Calibrator:

- Unit: N.m, cN.m, in.lb, ft.lb, kg.cm
- Automatically load clockwise or counterclockwise
- The test curve can be displayed in real time
- Four test modes: preset mode, preset mode (manual), indication mode (standard), indication mode (device under test)
- Pre-defined test templates for use when testing wrenches of the same specifications
- Single-point and multi-point automated testing and fatigue testing of torque wrenches
- 7-inch HD touchscreen, the instrument can measure ambient temperature, humidity, and atmospheric pressure
- Export data to a USB driver
- Can be connected to a barcode scanner and a label printer, scan the QR code or barcode to retrieve instrument information, once the calibration is complete, a "Pass" label will be printed automatically
- Features unique PID control and constant torque loading, enabling rapid calibration of high and low ranges on torque wrenches
- The measurement and control system is developed based on the Linux operating system
- The torque sensor features a square-ended design, screwless mounting for quick plug-and-play replacement
- Built-in Ethernet and Wi-Fi

Metering management platform software (included):

- Developed on the Linux operating system, compatible with Windows Professional
- Send the sample information and test templates to the calibrator, scan the sample code to start measuring right away
- The test data is uploaded to the metering management system in batches through the LAN
- Unified management entrusting unit, sample information, certificate and original record generation, test personnel, expiration reminder and etc.
- Manage basic system data, including role management, department management, user management, menu management, system settings and etc.
- Certificate editing supports multiple data entry methods, allows for certificate review and approval, and enables reports to be exported to common file formats, facilitating data sharing and transfer
- Statistical query and analysis features



application

SPECIFICATION

Automatic load torque range	1~1000N.m
Sampling frequency	≥1500Hz
Arm length range	135~1185mm
Limit stop angle	±20°
Adaptor	3/4" to 1/2", 3/4" to 3/8", 3/4" to 1/4"
Opening pagoda head*	19mm, 24mm, 30mm
Socket size (S)	3/4"
Power supply	AC220V, 50Hz
Dimension (L x W x H)	1330×440×300mm
Net weight	60kg

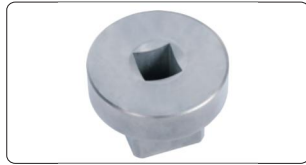
*Other opening sizes can be customized



torque sensor

TORQUE SENSOR SPECIFICATION

Code	IST-HT-TT50 (optional)	IST-HT-TT200 (optional)	IST-HT-TT1000 (included)
Range	1~50N.m	4~200N.m	20~1000N.m
Accuracy	±1% of indicated value (2%~10%); ±0.5% of indicated value (10%~100%)		
Resolution	0.001N.m	0.01N.m	0.1N.m
Dimension (L x W x H)	58×58×125mm	58×58×125mm	58×58×125mm
Net weight	1650g	1650g	1650g



adaptor (included)



opening pagoda head (included)



barcode scanner (included)



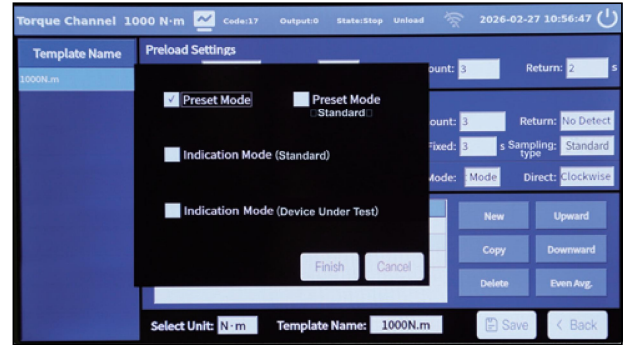
label printer (included)



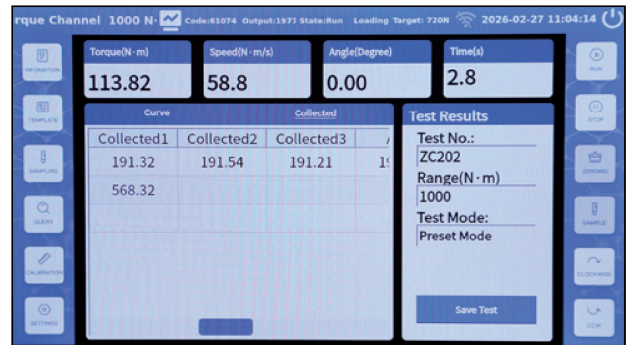
handheld control box (included)



temperature and humidity and atmospheric pressure sensor (included)



selection of test modes on the calibrator



calibrator test process interface

STANDARD DELIVERY

Main unit	1 pc
Metering management platform software	1 set
Computer	1 pc
Torque sensor (IST-HT-TT1000)	1 pc
Adaptors	3 pcs
Opening pagoda head	1 pc
Barcode scanner	1 pc
Label printer	2 pcs
Handheld control box	1 pc
Temperature and humidity and atmospheric pressure sensor	1 pc
Power adapter	1 pc
Ethernet cable	1 pc